



#BLISS

AT GODREJ PALM RETREAT

Campaign name: #Bliss | Project name: Godrej Palm Retreat 2
Sector 150, Noida

BRAND GODREJ

Godrej Properties brings the Godrej Group philosophy of innovation, sustainability, and excellence to the real estate industry. Each Godrej Properties development combines a 124-year legacy of excellence and trust with a commitment to cutting-edge design and technology.



IN RECENT YEARS, GODREJ PROPERTIES HAS RECEIVED OVER 200 AWARDS AND RECOGNITIONS, INCLUDING



BY TRUST RESEARCH ADVISORY'S
BRAND TRUST REPORT 2019



BY GLOBAL BY REAL ESTATE
SUSTAINABILITY BENCHMARKS



AT THE 13TH CNBC-AWAAZ
REAL ESTATE AWARDS 2019



THE ECONOMIC
TIMES BEST
REAL ESTATE
BRAND 2018



REAL ESTATE
COMPANY OF
THE YEAR

AT THE CONSTRUCTION WEEK
AWARDS 2019



INDIA'S
TOP BUILDERS
2018

AT THE CONSTRUCTION WORLD ARCHITECT
AND BUILDER (CWAB) AWARDS 2019



BUILDER
OF THE
YEAR

AT THE CNBC-AWAAZ
REAL ESTATE AWARDS 2018



GODREJ PROPERTIES' FIRST EVER LOW-RISE, RESORT-STYLE DEVELOPMENT IS HERE.

Artist's impression, not an actual site photograph



RESORT TO A LIFESTYLE

RIGHT OUT OF YOUR DREAMS!



**HOME IN THE
GREENEST SECTOR
OF NOIDA***



**EXOTIC RESORT
LIVING**



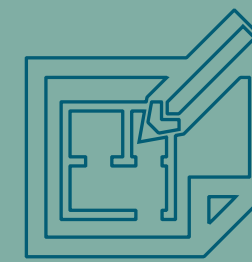
**TERRACE
GARDEN ARENA**



**RESORT STYLE
LOW RISE DEVELOPMENT**



**GREEN
HAVEN**

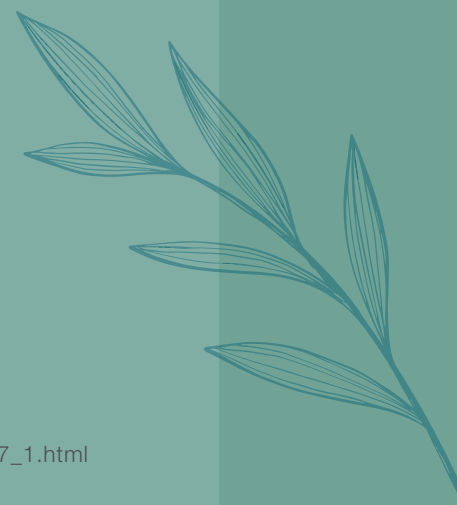


**CONSCIOUSLY
CRAFTED**



HOME IN THE GREENEST SECTOR IN NOIDA*

WITH CONVENIENCES AND
COMFORTS THAT ARE CLOSER TO YOU















*https://www.business-standard.com/article/pf/infra-development-driving-ncr-s-greenest-locality-at-noida-sector-150-118062701377_1.html

Artistic impression, not an actual site photograph

LOCATION MAP



LEGENDS

-  **#BLISS**
AT GODREJ PALM RETREAT
-  LANDMARK
-  COMMERCIAL
-  AIRPORT
-  MALL
-  HOSPITAL
-  SCHOOL/UNIVERSITY
-  CRICKET STADIUM
-  F1 INTERNATIONAL CIRCUIT
-  GOLF COURSE
-  PARK
-  METRO STATION

Source: Google maps. Map not to scale. | *Proposed to be developed



WELCOME TO THE GREENEST SECTOR OF NOIDA
WHERE LIVING IS AN EVERYDAY JOY*

*https://www.business-standard.com/article/pf/infra-development-driving-ncr-s-greenest-locality-at-noida-sector-150-118062701377_1.html

Stock image is for representation purposes only



*EASY CONNECTIVITY TO
SECTOR 148 METRO STATION*

CLOSE PROXIMITY TO THE PROPOSED
NOIDA INTERNATIONAL AIRPORT*



*<https://www.livemint.com/news/india/jewar-airport-developer-to-be-nalised-by-november-1559281015688.html> | https://gbnagar.nic.in/jewar_airport/ Stock image for representative purpose only

Stock image is for representation purposes only

EASY CONNECTIVITY TO THE THREE MAJOR EXPRESSWAYS

NOIDA-GREATER NOIDA EXPRESSWAY - 1 KM*

YAMUNA EXPRESSWAY - 5 KM*

FNG EXPRESSWAY - 5 KM*



*Approx. distance at per Google maps

Stock image is for representation purposes only

SOCIAL INFRASTRUCTURE

WHERE THE BEST OF SOCIAL INFRASTRUCTURE SURROUNDS THE ADDRESS

SCHOOLS

- Lotus Valley International School, Sector 126 - Noida
- DPS Gautam Budhha Nagar, Sector 132 - Noida
- Somerville International School, Sector 132 - Noida
- Shriram Millenium School, Sector 135 - Noida
- Genesis Global School, Sector 132, Noida

COLLEGES & TECHNICAL INSTITUTES

- UP Technical University, Sector 62 - Noida
- Amity University, Sector 125 - Noida
- Galgotia University, Sector 17A - Greater Noida
- Sharda University, Knowledge Park III - Greater Noida
- Asian Academy of Film and Television, Sector 16A - Noida

HOSPITALS & HEALTHCARE SETUPS

- Fortis, Sector 62 - Noida
- Apollo, Sector 26 - Noida
- Kailash Hospital, Sector 27 - Noida
- Max Hospital, Sector 19 - Noida
- Felix Hospital, Sector 137 - Noida

CORPORATES

- Honda
- Moser Baer
- LG
- Wipro Technologies
- Ansal IT City And Parks Ltd.
- NIIT Technologies Ltd.



A WORLD OF CONVENIENCE AT YOUR FINGERTIPS



HUGE PARK

Stock image is for representation purposes only



SPORTS

Stock image is for representation purposes only



HOSPITALS

Stock image is for representation purposes only



ENTERTAINMENT

Stock image is for representation purposes only



SCHOOLS

Stock image is for representation purposes only



ONE OF THE BIGGEST PARKS IN THE COUNTRY, JUST A LEISURELY WALK AWAY*

Stock image is for representation purposes only

The Shaheed Bhagat Singh Park# will be one of the biggest parks in the country once completed. Spread across 16 hectares, this magnificent park will be an ideal place to spend quality time with your loved ones. Situated at a walking distance from the project, this park will act as a green lung for you like no other.

SHAHEED BHAGAT SINGH PARK FEATURES:

- Home to over 2000 large trees comprising of 58 native, naturalised and ornamental species
- Will incorporate about 45,000 shrubs to its green cover
- A unique ecosystem comprising of plants, small animals, insects, birds, butterflies etc.

*<https://www.timesnownews.com/india/article/noida-park-martyrs-freedom-ghters-august-15-shaheed-bhagat-singh-park-sector-150-uttar-pradesh-pulwama-news/367861>

#Proposed. Not to be a part of Godrej Palm Retreat





MEGA SPORTS CITY – 9-HOLE GOLF COURSE & GOLF CLUB*

Stock image is for representation purposes only



INTERNATIONAL STANDARD CRICKET ACADEMY*

Stock image is for representation purposes only



EXPANSIVE RETAIL AND ENTERTAINMENT CENTRE*

Stock image is for representation purposes only

*Proposed to be developed. Not a part of the project. It will be developed by a third party for which the developer is not responsible.

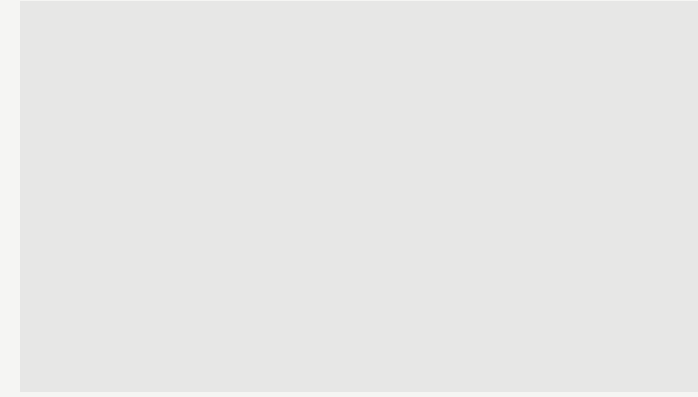


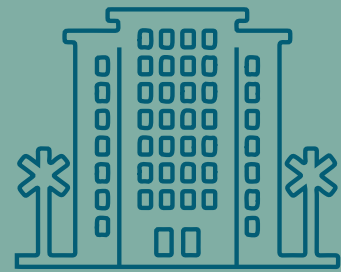
PRESENTING #BLISS AT GODREJ PALM RETREAT

Godrej Properties brings you enchanting low-rise resort-style residences at #Bliss by Godrej Palm Retreat. Built for meaning here. Our low-rise homes ensure low-density quality living with the finest indulgences. #Bliss at Godrej Palm Retreat will be your preferred resort within the comfort of your home. Come, experience the never-ending vacation.

Artist's impression, not an actual site photograph

MASTER LAYOUT PLAN





RESORT STYLE LOW RISE DEVELOPMENT

EXPERIENCE A TROPICAL
LOW-RISE LOW-DENSITY LIFESTYLE



Artist's impression, not an actual site photograph



VIEW FROM ENTRY

Artist's impression, not an actual site photograph



*EXQUISITELY DESIGNED FEATURES
TO GREET YOU AT EVERY STEP*

Artist's impression, not an actual site photograph

DOUBLE-HEIGHT LOBBY



Artist's impression, not an actual site photograph

CENTRAL LANDSCAPING



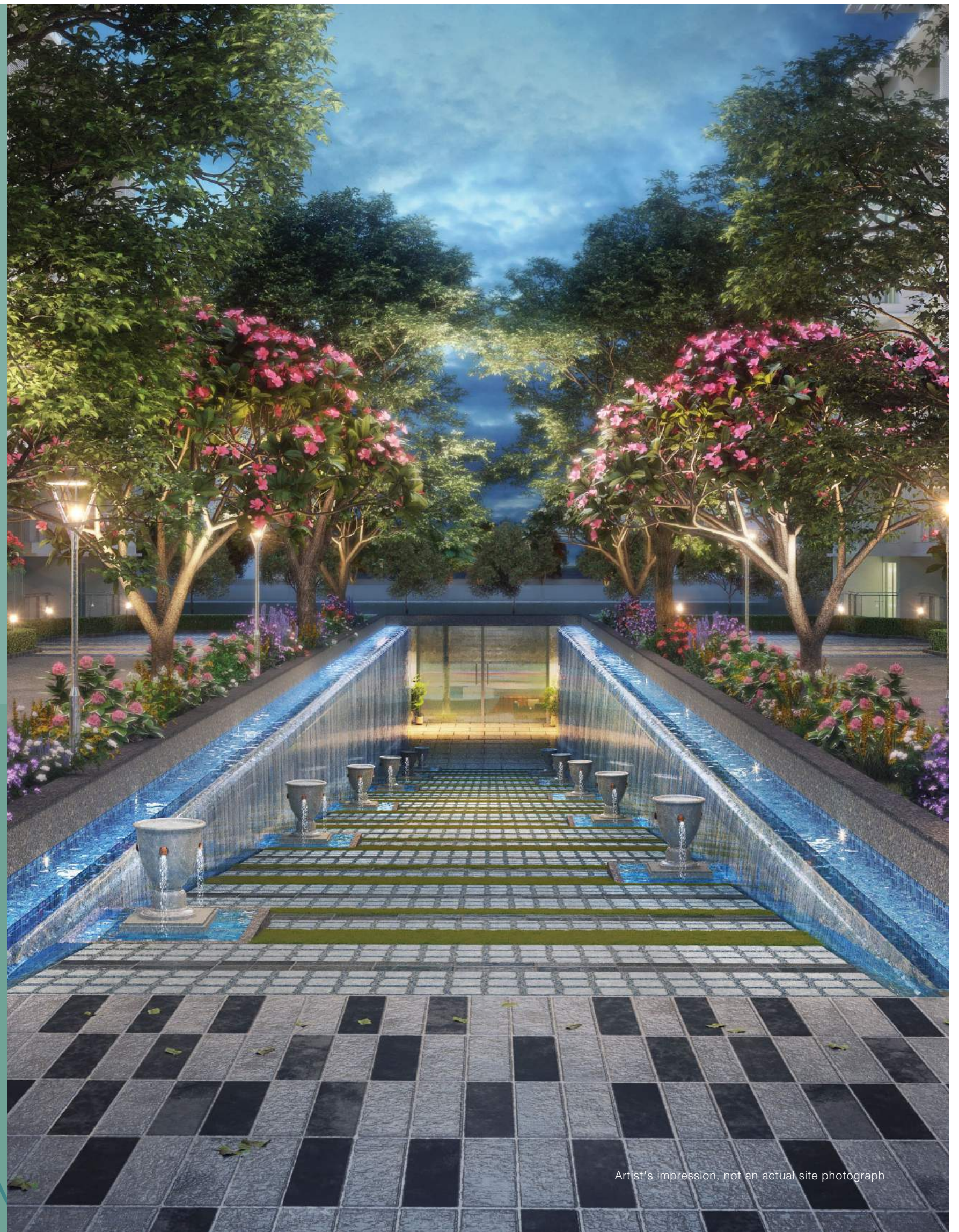
Artist's impression, not an actual site photograph



EXOTIC RESORT LIVING

WITH SUNKEN CLUBHOUSE
- 3716.09 SQ. MT.

1 SQ. M. = 10.764 SQ. FT.



Artist's impression, not an actual site photograph



CLUBHOUSE LOBBY

Artist's impression, not an actual site photograph



SWIMMING POOL

Artist's impression, not an actual site photograph

*UNIQUELY DESIGNED BEST-IN-CLASS
FLOATING RESTAURANT*



Stock image is for representation purposes only

*UNWIND IN STYLE WITH
POOLSIDE CABANAS*



Stock image is for representation purposes only

*WATER CHANNELS WITH SHALLOW BROOKS
AND PEDESTRIAN WALKWAYS*



Stock image is for representation purposes only

*UNWIND AND TREAT YOUR SENSES
AT THE LUXURY SPA**



Stock image is for representation purposes only

*To be a part of Godrej Palm Retreat-2



BESPOKE LANDSCAPE

Stock image is for representation purposes only

CLUB AMENITIES



GYM



Stock image is for representation purposes only

MINI-THEATRE



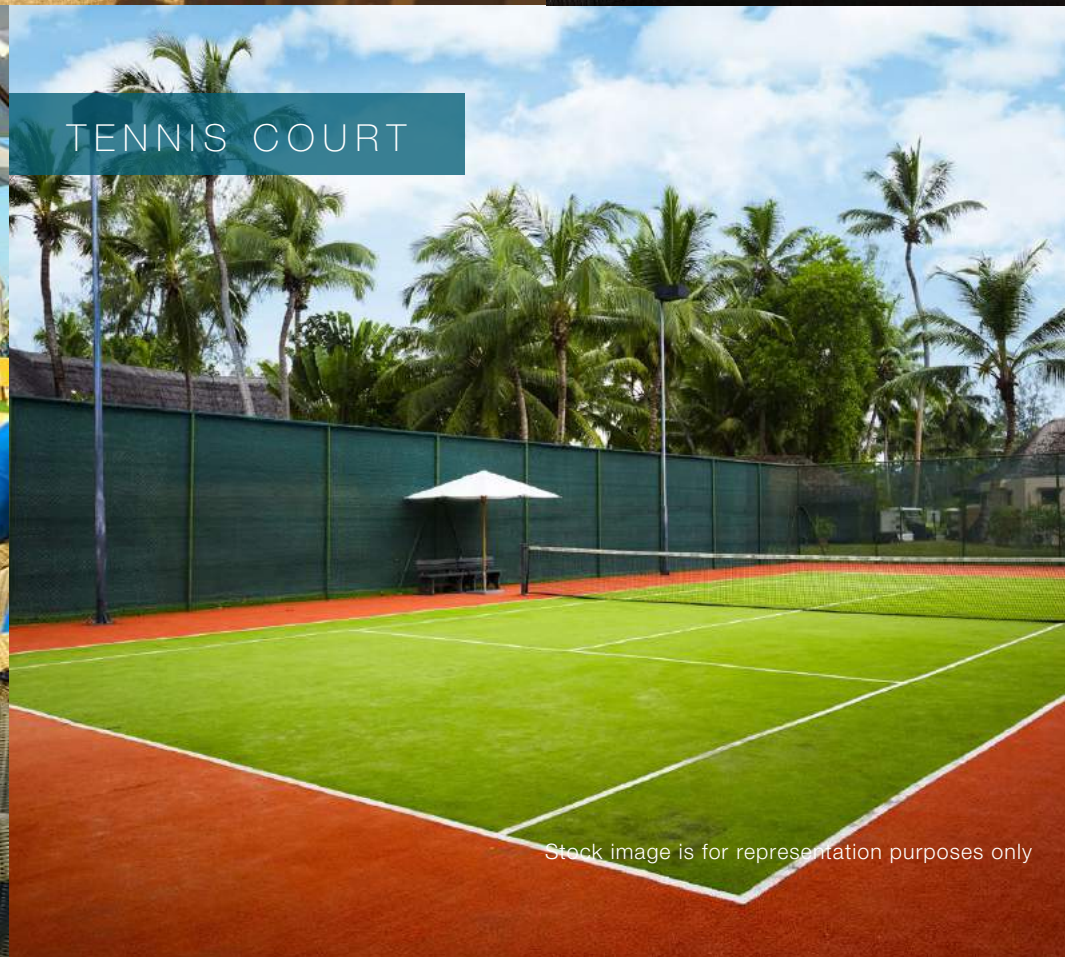
Stock image is for representation purposes only

SWIMMING POOL



Stock image is for representation purposes only

TENNIS COURT



Stock image is for representation purposes only

BADMINTON COURT



Stock image is for representation purposes only



SQUASH COURT

Stock image is for representation purposes only



KIDS' PLAY AREA

Stock image is for representation purposes only



LIBRARY

Stock image is for representation purposes only



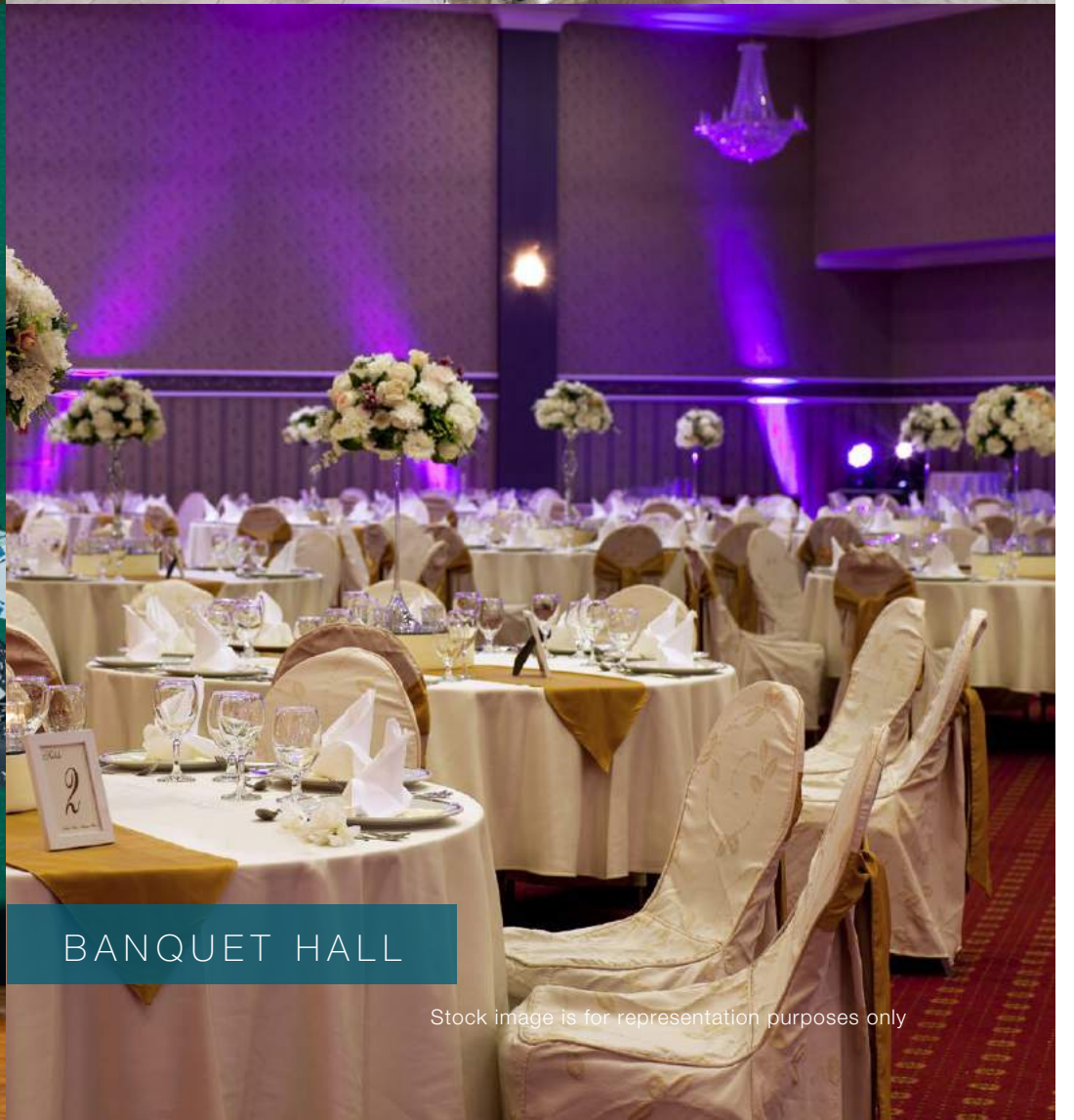
INDOOR GAMES ARENA

Stock image is for representation purposes only



CARDS ROOM

Stock image is for representation purposes only



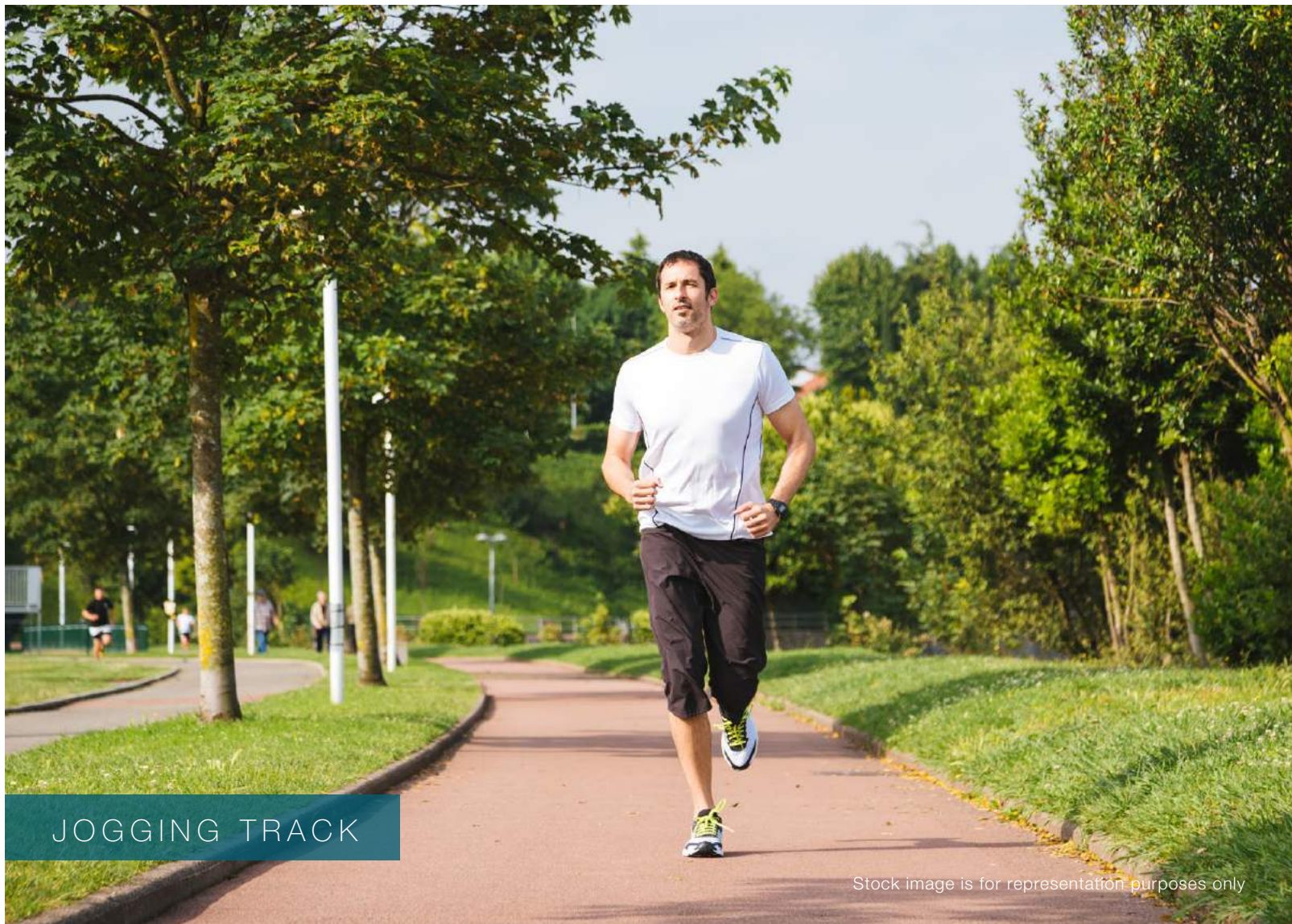
BANQUET HALL

Stock image is for representation purposes only



KOI-LILY POND

Stock image is for representation purposes only



JOGGING TRACK

Stock image is for representation purposes only



BRANDED RETAIL

Stock image is for representation purposes only



AMPHITHEATRE

Stock image is for representation purposes only



SCULPTURED KIDS' PLAY AREA

Stock image is for representation purposes only



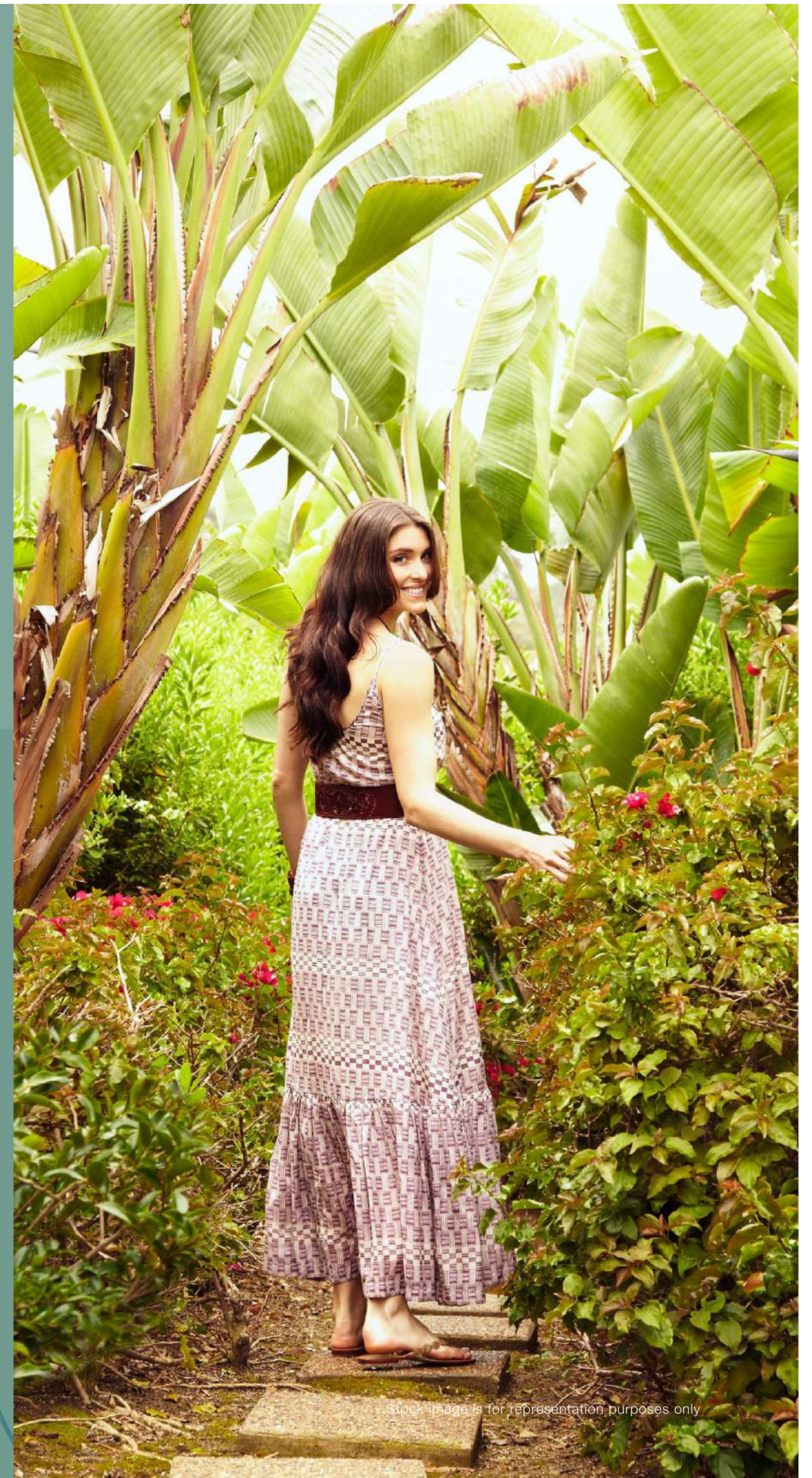
INTERACTIVE FOUNTAIN

Stock image is for representation purposes only



GREEN HAVEN

REJUVENATE YOUR SENSES
AMIDST LUSH GREEN ENVIRONS



Stock image is for representation purposes only

*EXPERIENCE THE ABUNDANCE OF
20,000 SQUARE METRE OF CENTRAL GREENS*



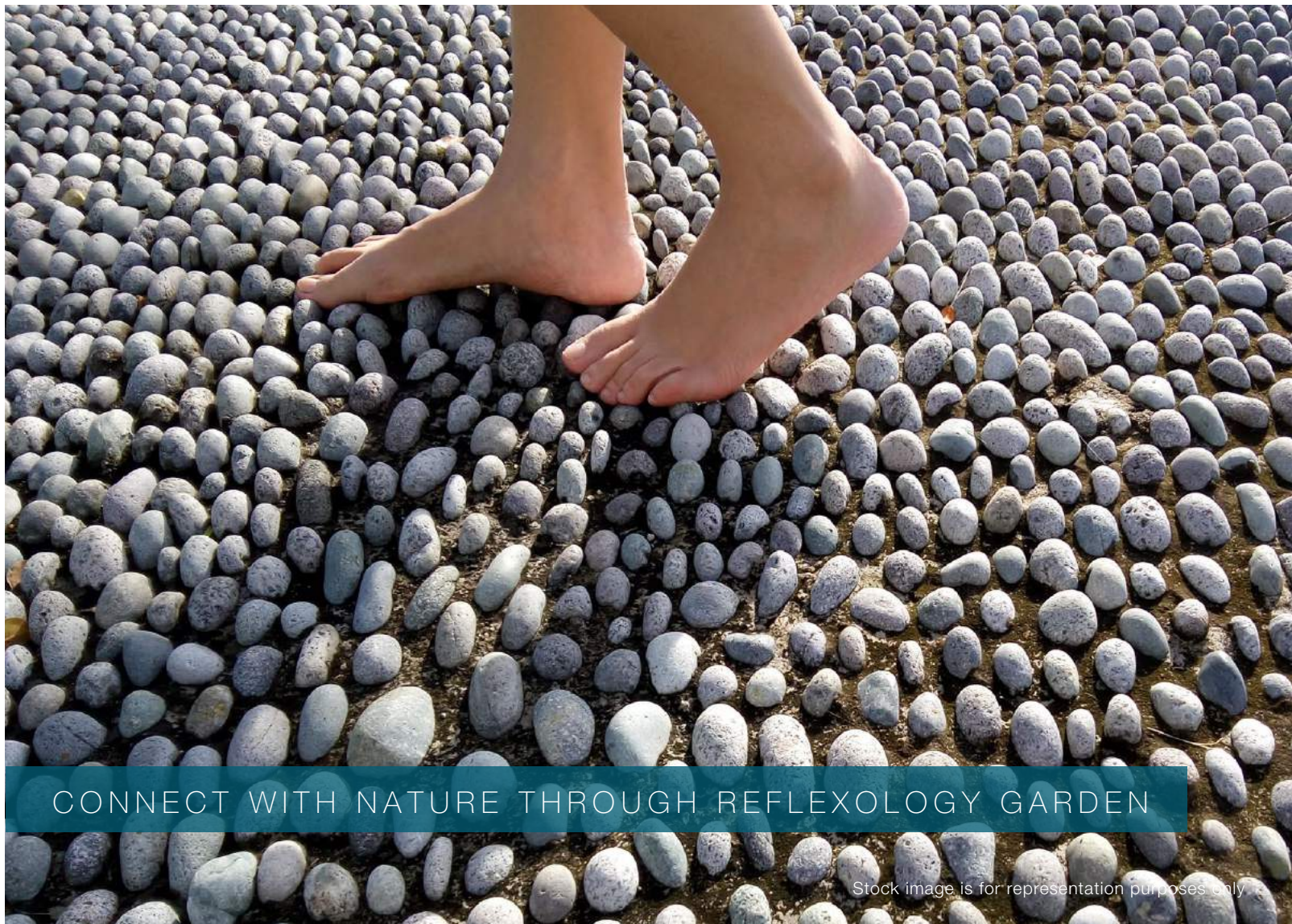
1 SQ. M. = 10.764 SQ. FT.

Stock image is for representation purposes only

*SEASONAL PLANTING PALETTE FOR AN
ENHANCED ENTRANCE LANDSCAPE*



Stock image is for representation purposes only



CONNECT WITH NATURE THROUGH REFLEXOLOGY GARDEN

Stock image is for representation purposes only



UNMATCHED EXPERIENCE OF BOTANICAL PATHWAY

Stock image is for representation purposes only



BUTTERFLY GARDEN TO RECHARGE YOUR SOUL

Stock image is for representation purposes only



SPECTACULAR COLOUR AND MAZE GARDEN

Stock image is for representation purposes only

EXQUISITE PLANTATIONS



Stock image is for representation purposes only



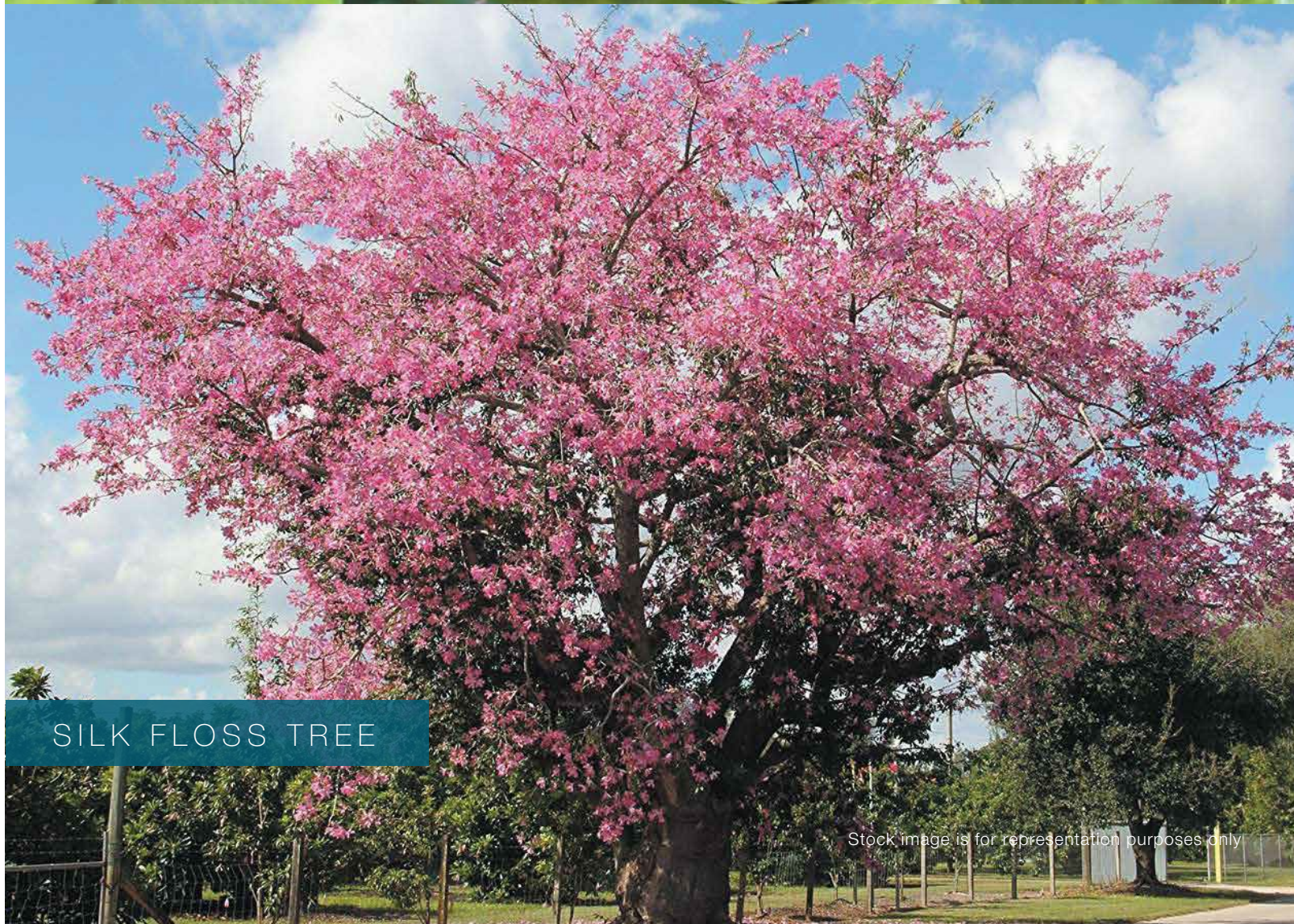
WEEPING FIG

Stock image is for representation purposes only



SHELL GINGER

Stock image is for representation purposes only



SILK FLOSS TREE

Stock image is for representation purposes only



MILKWOOD PINE

Stock image is for representation purposes only

PLUMERIA



Stock image is for representation purposes only

CHAMPA



Stock image is for representation purposes only

NIGHT JASMINE



Stock image is for representation purposes only

CAPE JASMINE



Stock image is for representation purposes only

ORANGE JASMINE



Stock image is for representation purposes only

THAI GRAPE



Stock image is for representation purposes only

PINK TABEBUIA

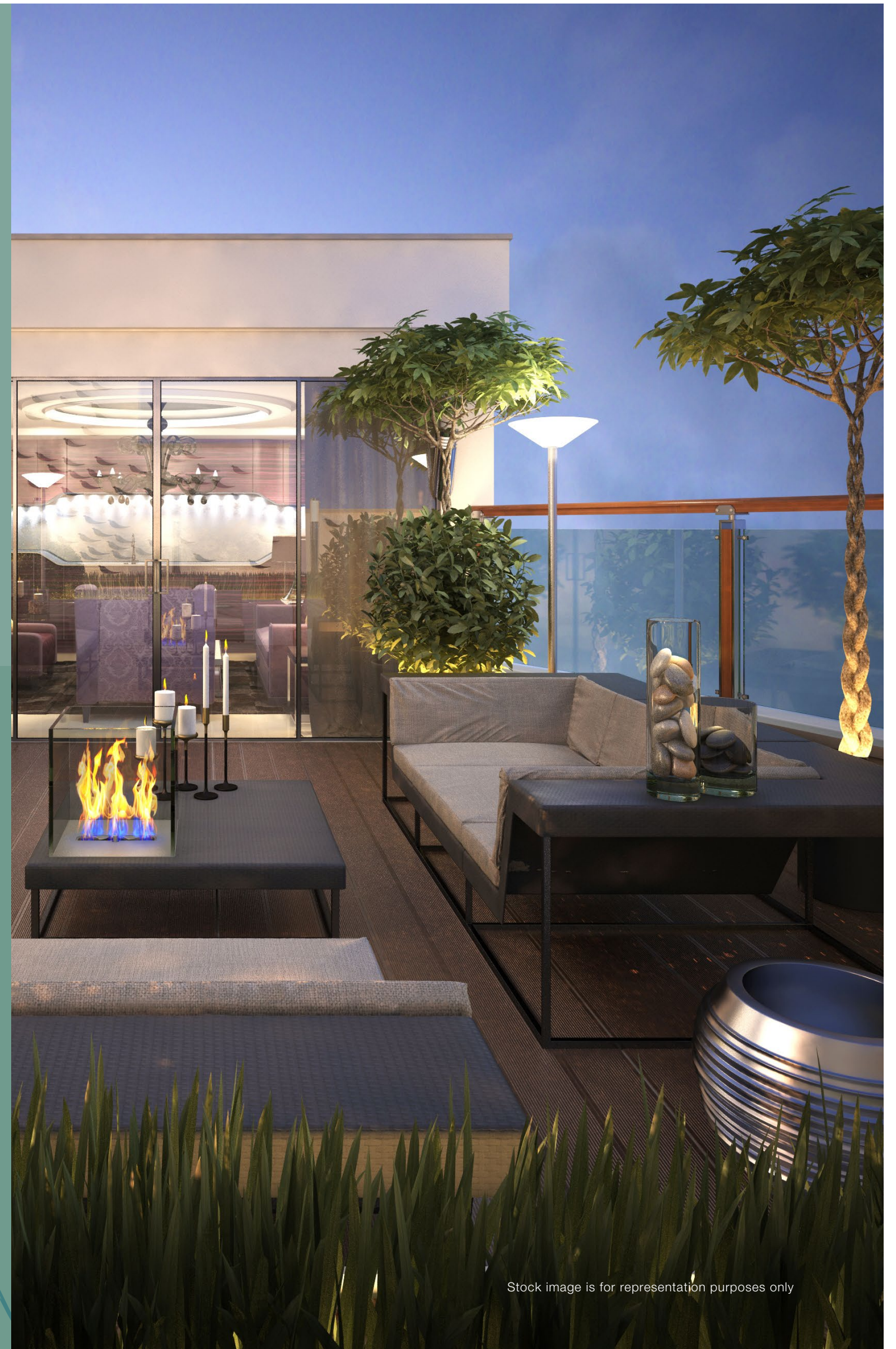


Stock image is for representation purposes only



TERRACE GARDEN ARENA

EXPERIENCE A WORLD OF PEACE
& TRANQUILITY AT 90 FT.
ABOVE THE GROUND- TERRACE
GARDEN ARENA



Stock image is for representation purposes only



RESORT TO A LIFE

WITH EXCLUSIVE ROOFTOP AMENITIES.

Artist's impression, not an actual site photograph

*SKY WALK OF ~9,000 SQUARE METRE.
SKY GARDENS*



Artist's impression, not an actual site photograph

*BESPOKE LANDSCAPE EXPERIENCE WITH
CONNECTED WALKWAYS ACROSS TOWERS*



Stock image is for representation purposes only

*SKY AMENITIES
-VIEWING GALLERY*



Stock image is for representation purposes only

PERGOLAS



Stock image is for representation purposes only

FRAGRANCE GARDEN



Stock image is for representation purposes only

REFLEXOLOGY COURT



Stock image is for representation purposes only

MEDITATION ARENA



Stock image is for representation purposes only

FOUNTAINS



Stock image is for representation purposes only

EXERCISE AREA



Stock image is for representation purposes only



CONSCIOUSLY CRAFTED

TO PROVIDE AN EXOTIC
EXPERIENCE AT EVERY STEP



Artist's impression, not an actual site photograph

READY TO ENJOY A RESORT LIFESTYLE?

UNWIND 24X7 WITH OUR LOW-DENSITY,
LOW-RISE RESORT THEMED HOMES.



Stock image is for representation purposes only

*HOMES DESIGNED FOR
EXCELLENT NATURAL DAY LIGHT*

Stock image is for representation purposes only

*COME HOME TO AN AMBIENCE WITH
WELL-VENTILATED LIVING ROOMS*



Stock image is for representation purposes only

SPACIOUS BEDROOMS

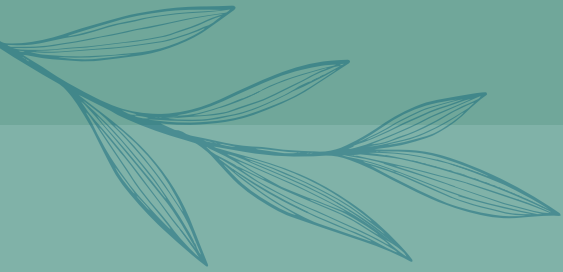


Stock image is for representation purposes only

GLASS RAILINGS IN BALCONIES



Artist's impression, not an actual site photograph

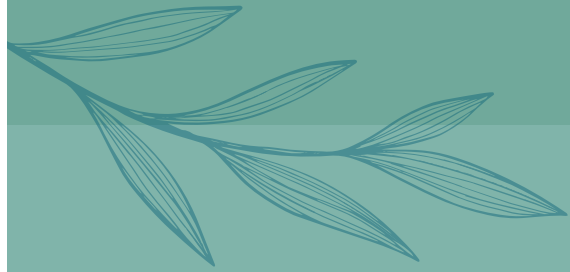


INVENTORY DETAILS

Total Area	Typology
83.09 M ²	2 BHK (Low Rise)
128.51 M ²	3 BHK (Low Rise)
161.71 M ²	3 BHK+ U (Iconic)
213.01 M ²	4 BHK + U (Iconic)

1 M² = 10.764 SQ. FT.





RTGS DETAILS

Account Title	GODREJ ACE 150 PHASE 2
Account No	777705800083
Bank Name	ICICI Bank
IFSC Code	ICIC0000177
Branch Address	DLF Square Building, Cyber City Gurugram



JOINT VENTURE PARTNER



Godrej Palm Retreat 1- UPRERAPRJ745601, Godrej Palm Retreat 2- UPRERAPRJ124632, available at www.up-rera.in. Building Plan no. Noida/M.V.N/2019/IV-1485/1121 dated 15.05.2019

Site office: Plot No.SC-02F, Sector 150, Noida, Uttar Pradesh 201308 | Campaign name: #Bliss | Project name: Godrej Palm Retreat 2

This Project is being developed by ACE Infracity Developers Pvt. Ltd ("Developer") which has appointed Godrej Projects Development Limited as the Development Manager. The Developer hereby declares that it has availed construction finance ("Facility") from ICICI limited ("Lender") and has secured the facility by mortgaging the Project Land in favour of the Lender. No objection Certificate bearing no. Noida/Comm/2020/1082 dated 16.10.2020 has been obtained from Noida in this respect. Phase 1 of the Project i.e. "Godrej Palm Retreat 1" comprises of Towers A1, Iconic A2, A3, A4, A5, B1, B2, B3, Iconic B4, B5 and E contains 430 Units along with 21 commercial units, comprised in approx. 33,500 sq. meters out of the Project Land. Phase 2 of the Project "Godrej Palm Retreat 2", comprises of Towers C1, Iconic C2, C3, C4 and C5 contains 211 Units comprised in 12,750 sq. meters out of the Project Land. The balance 11,814.71 sq. meters out of the Project Land ("Future Development") shall be developed at a future stage and shall be registered with UPRERA prior to selling and marketing. This contains artistic impression and is for informational purpose only and no warranty is expressly or impliedly given that the completed development will comply in any degree as depicted. All specifications of the apartment shall be as per the final agreement executed with the Developer. Customers are advised to apprise themselves of the necessary and relevant information of the Project and offer(s) prior to making any purchase decisions. The official website of Godrej Properties Limited is www.godrejproperties.com. Please do not rely on any other website.